

South Quarter corner Section 11, North Quarter Section 14, Township 12 North, Range 70 West

**CERTIFIED LAND CORNER RECORDATION**

**DESCRIPTION OF CORNER EVIDENCE FOUND, AND ORIGINAL RECORD (if known)**

The original corner was a sand stone 15" x 11" x 6" marked 1/4 on the North

Found no evidence at this corner set on a straight line between Northwest corner and Northeast corner at the mid point

**DESCRIPTION OF MONUMENT AND ACCESSORIES ESTABLISHED TO PERPETUATE THE ORIGINAL LOCATION OF THIS CORNER:**

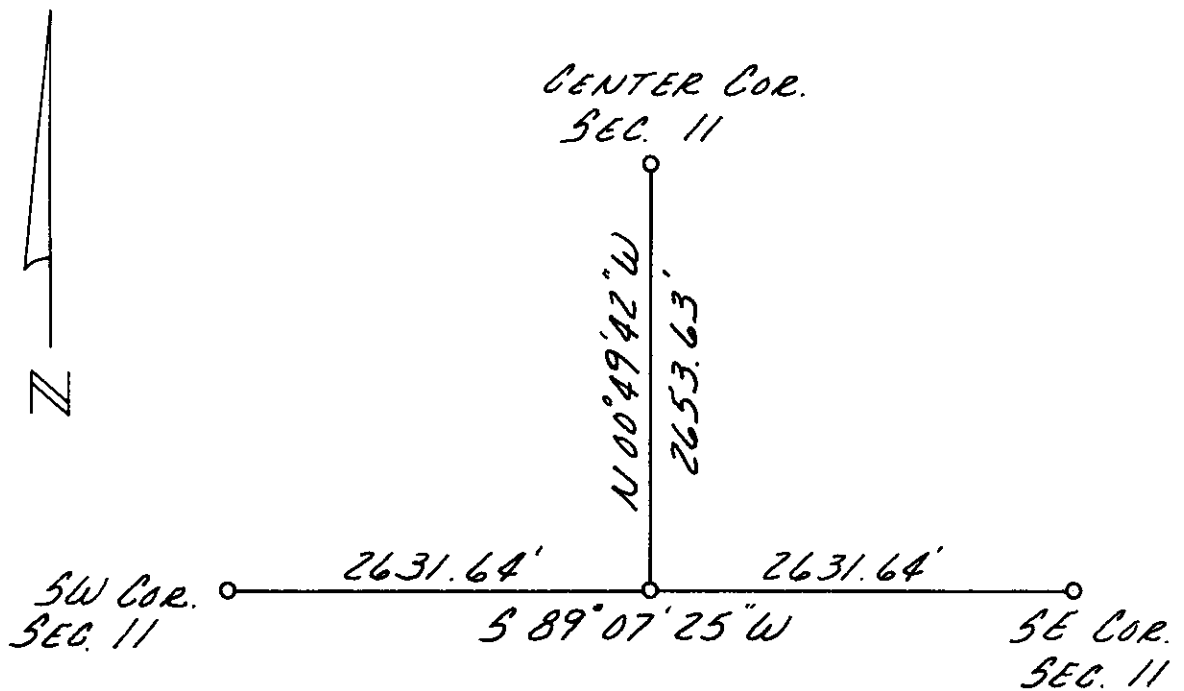
Set a 5/8 inch copper rod with 1 1/2 inch copper cap stamped P.E. & L.S. 692 From corner to ties

North Northeast 158.78' to nail and flagging in old drift line fence post

Northeast 42.28 feet to nail and flagging in old drift line fence post

West Northwest 129.90 feet to nail and flagging in Railroad tie on corral post

**SKETCH, WITH COURSE AND DISTANCE TO ADJACENT CORNER IF DETERMINED IN THIS SURVEY. (May Sketch or Paste Reproduction on Reverse Side.)**



I, Neil M. Kruback certify that I have carefully performed or reviewed the work done on the diagrammed corner as reported on this recordation form and approve the same.

Neil M. Kruback  
Signature of Surveyor

692  
Registration No.

STATE OF WYOMING,  
Office of Clerk and Recorder,  
County of Taramie

This "corner record" was filed for record on the 18 day of December, 1973, was noted on the cross-index plat and is assigned page No. \_\_\_\_\_, in book No. \_\_\_\_\_.

John B. Huismann  
County Official

Cross Index No. <u>J-19</u>	T. <u>12 N</u>	R. <u>70W 6thP</u>	Mer.
_____	T. _____	R. _____	Mer.
_____	T. _____	R. _____	Mer.
_____	T. _____	R. _____	Mer.
_____	T. _____	R. _____	Mer.
_____	T. _____	R. _____	Mer.
_____	T. _____	R. _____	Mer.

Photographed ✓  
Indexed ✓  
No. 1  
1

The State of Wyoming }  
County of Laramie } ss  
This instrument was filed for record  
at 11 27 o'clock A. M. on the  
18 day of December  
A. D. 19 73 and duly recorded in  
Book \_\_\_\_\_ on page \_\_\_\_\_

*John S. Williams*  
[Signature]